

AA	Alluminio Anodizzato / <i>Anodised aluminium</i>
AV	Alluminio Verniciato / <i>Coated aluminium</i>
CR	Cromato / <i>Chromed</i>
IL	Acciaio Inox Lucido / <i>Polished stainless steel</i>
IS	Acciaio Inox Satinato / <i>Satin stainless steel</i>
KE	Effetto Corten / <i>Corten effect</i>
NL	Nichel Nero / <i>Black nickel</i>
OS	Effetto Ottone Satinato / <i>Satin brass effect</i>
SP	Verniciatura Speciale / <i>Special coating</i>
VA	Verniciato Antracite / <i>Anthracite Coated</i>
VB	Verniciato Bianco / <i>White Coated</i>
VF	Verniciato Grafite / <i>Graphite Coated</i>
VL	Verniciato Lino / <i>Linen Coated</i>
VM	Verniciato Mattone / <i>Brick red Coated</i>
VN	Verniciato Nero / <i>Black Coated</i>
VO	Verniciato Avio / <i>Air-force blue Coated</i>
VT	Verniciato Tortora / <i>Dove grey Coated</i>
VV	Verniciato Verde Tiglio / <i>Willow green Coated</i>
VY	Verniciato Senape / <i>Mustard yellow Coated</i>
VZ	Verniciato Azzurro / <i>Light blue Coated</i>
ZA	Zincato e Verniciato Antracite / <i>Zinc and anthracite Coated</i>
ZE	Zincato e Verniciato Terracotta / <i>Zinc and terracotta Coated</i>
ZL	Zincato e Verniciato Lino / <i>Zinc and linen Coated</i>
ZN	Zincato e Verniciato Nero / <i>Zinc and black Coated</i>
ZO	Zincato e Verniciato Avio / <i>Zinc and air-force blue Coated</i>
ZP	Zincato e Verniciato Rosa Antico / <i>Zinc and antique pink Coated</i>
ZT	Zincato e Verniciato Tortora / <i>Zinc and dove grey Coated</i>
ZV	Zincato e Verniciato Verde Oliva / <i>Zinc and olive green Coated</i>
ZY	Zincato e Verniciato Senape / <i>Zinc and mustard yellow Coated</i>
F1	Faggio Sbiancato per serie Chloé Mon Amour / <i>Bleached beech for Chloe models</i>
FB	Faggio Tinto Nero / <i>Black stained beech</i>
FG	Faggio Verniciato Grigio / <i>Grey stained beech</i>
FK	Faggio Smoke / <i>Smoke beech</i>
FN	Faggio Naturale / <i>Natural beech</i>
FS	Faggio Sbiancato / <i>Bleached beech</i>
FW	Faggio Wengé / <i>Wenge beech</i>
HS	Frassino Sbiancato / <i>Bleached ash wood</i>

NC	Noce Canaletto / <i>Walnut</i>
NR	Rovere Nero / <i>Black oak</i>
RN	Rovere Naturale / <i>Natural oak</i>
HPL	Stratificato Compact / <i>Compact laminate</i>
TP	Tecnopolimero / <i>Technopolymer</i>
FX	Piedino Fisso / <i>Fixed foot</i>
AY	Finiture tessuti per imbottiti / <i>Fabric details for upholstered items</i>
CNY	Finiture tessuti per imbottiti / <i>Fabric details for upholstered items</i>
EPX	Finiture tessuti per imbottiti / <i>Fabric details for upholstered items</i>
EPY	Finiture tessuti per imbottiti / <i>Fabric details for upholstered items</i>
KY	Finiture tessuti per imbottiti / <i>Fabric details for upholstered items</i>
MX	Finiture tessuti per imbottiti / <i>Fabric details for upholstered items</i>
MY	Finiture tessuti per imbottiti / <i>Fabric details for upholstered items</i>
TC	Tessuto cliente / <i>Com - customer own material</i>
TX	Finiture tessuti per imbottiti / <i>Fabric details for upholstered items</i>
TY	Finiture tessuti per imbottiti / <i>Fabric details for upholstered items</i>
T4X	Finiture tessuti per imbottiti / <i>Fabric details for upholstered items</i>
T4Y	Finiture tessuti per imbottiti / <i>Fabric details for upholstered items</i>
T7X	Finiture tessuti per imbottiti / <i>Fabric details for upholstered items</i>
V3X	Finiture tessuti per imbottiti / <i>Fabric details for upholstered items</i>
V3Y	Finiture tessuti per imbottiti / <i>Fabric details for upholstered items</i>
V4X	Finiture tessuti per imbottiti / <i>Fabric details for upholstered items</i>
V4Y	Finiture tessuti per imbottiti / <i>Fabric details for upholstered items</i>
WFY	Finiture tessuti per imbottiti / <i>Fabric details for upholstered items</i>
WPX	Finiture tessuti per imbottiti / <i>Fabric details for upholstered items</i>
N...	Corda nautica per Lisa Filò / <i>Nautical rope for Lisa Filò</i>
P...	Corda in estruso di PVC per Lisa Club / <i>Woven extruded PVC for Lisa Club</i>

POLICARBONATO / POLYCARBONATE



100
trasparente
transparent



130
trasparente
arancio
*transparent
orange*



140
trasparente
rosso
*transparent
red*



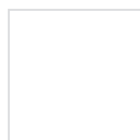
183
trasparente
fumé
*transparent
smoked*



340
rosso pieno
glossy red



315
tortora pieno
*glossy
dove grey*



310
bianco pieno
glossy white



380
nero pieno
glossy black

TECNOPOLIMERO CO-STAMPATO / OVERMOULDED TECHNOPOLYMER



201
trasparente
+ lino
*transparent
+ linen*



204
trasparente
+ arancio
*transparent
+ orange*



206
trasparente
+ rosso
*transparent
+ red*

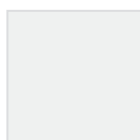


202
trasparente
+ sabbia
*transparent
+ sand*



209
trasparente
+ antracite
*transparent
+ anthracite
grey*

TECNOPOLIMERO / TECHNOPOLYMER



11
lino
linen



15
tortora
dove grey



81
antracite
anthracite grey



86
grafite
graphite



82
grigio chiaro
light grey



30
arancio
orange



40
rosso
red



42
rosso geranio
geranium red



20
giallo
yellow



22
senape
mustard yellow



51
verde
pistacchio
light green



56
verde oliva
olive green



62
azzurro
light blue



63
avio
air-force blue



61
fiordaliso
cornflower blue



60
blu
blue



73
terracotta
terracotta



72
cacao
cocoa



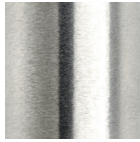
70
bronzo
bronze

ACCIAIO E ACCIAIO INOX / STEEL AND STAINLESS STEEL

Le verniciature sono a polvere poliestere / coating is polyester powder based



CR
acciaio cromato
chromed steel



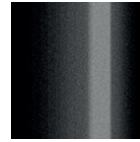
IS
acciaio inox
satinato / *satin stainless steel*



IL
acciaio inox
lucido
polished stainless steel



OS
acciaio effetto
ottone satinato
satin brass effect steel



NL
acciaio finitura
nichel nero
lucido / *glossy black nickel steel*



VB
acciaio verniciato
bianco opaco
finitura liscia
mat white coated steel smooth finish



VL
acciaio verniciato
lino opaco finitura
goffrata / *mat linen coated steel embossed finish*



VT
acciaio verniciato
tortora opaco
finitura goffrata
mat dove grey coated steel, embossed finish



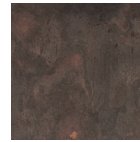
VF
acciaio verniciato
grafite opaco
finitura goffrata
mat graphite coated steel, embossed finish



VA
acciaio verniciato
antracite opaco
finitura goffrata
mat anthracite grey coated steel, embossed finish



VN
acciaio verniciato
nero opaco
finitura goffrata
mat black coated steel, embossed finish



KE
acciaio effetto
corten / *corten effect steel*



VY
acciaio verniciato
senape opaco
finitura goffrata
mat mustard yellow coated steel, embossed finish



VO
acciaio verniciato
avio opaco finitura
goffrata / *mat air-force blue coated steel, embossed finish*

ALLUMINIO / ALUMINIUM

Le verniciature sono a polvere poliestere / coating is polyester powder based



AA
alluminio
anodizzato
anodised aluminium



AV 10
alluminio verniciato
bianco opaco
finitura goffrata
mat white coated aluminium, embossed finish



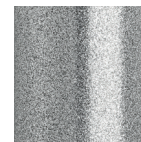
AV 15
alluminio verniciato
tortora opaco
finitura goffrata
mat dove grey coated aluminium, embossed finish



AV 70
alluminio verniciato
bronzo opaco
finitura goffrata
mat bronze coated aluminium, embossed finish



AV 81
alluminio verniciato
antracite opaco
finitura goffrata
mat anthracite grey coated aluminium, embossed finish

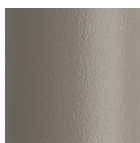


AV 84
alluminio verniciato
argento finitura
lucida / *silver coated aluminium, polished finish*

**ACCIAIO ZINCATO E VERNICIATO A POLVERE POLIESTERE PER INTERNO/ESTERNO
ZINC AND POLYESTER POWDER COATED STEEL INDOOR/OUTDOOR USE**



ZL
acciaio zincato e
verniciato lino
opaco, finitura
goffrata / *zinc and mat linen, coated, embossed finish*



ZT
acciaio zincato e
verniciato tortora
opaco, finitura
goffrata / *zinc and mat dove grey coated, embossed finish*



ZA
acciaio zincato e
verniciato antracite
opaco, finitura
goffrata / *zinc and mat anthracite coated, embossed finish*



ZY
acciaio zincato e
verniciato senape
opaco, finitura
goffrata / *zinc and mat mustard coated, embossed finish*



ZE
acciaio zincato e
verniciato terracotta
opaco, finitura
goffrata / *zinc and mat terracotta coated, embossed finish*



ZO
acciaio zincato
e verniciato avio
opaco, finitura
goffrata / *zinc and mat air-force blue coated, embossed finish*



ZP
acciaio zincato
e verniciato rosa
antico opaco,
finitura goffrata
zinc and mat antique pink coated, embossed finish



ZV
acciaio zincato e
verniciato verde
oliva opaco, finitura
goffrata / *zinc and mat olive green coated, embossed finish*



ZN
acciaio zincato e
verniciato nero
opaco, finitura
goffrata / *zinc and mat black coated, embossed finish*

Per abbinamento categorie tessuti ai prodotti far riferimento alle schede tecniche. Per ragioni tecniche di stampa o di fotografia i colori stampati possono differire dai colori reali. / Please refer to each model on the technical sheet for matching the fabrics. Printed colours may be different than real ones because of printing or photographic technical reasons.

FINITURE SUMMER E LEO – ACCIAIO ZINCATO E VERNICIATO A POLVERE POLIESTERE PER INTERNO/ESTERNO
SUMMER AND LEO FINISHING – ZINC AND POLYESTER POWDER COATED STEEL INDOOR/OUTDOOR USE



VB
acciaio zincato e verniciato bianco opaco, finitura gofrata / *zinc and white mat coated steel, embossed finish*



VT
acciaio zincato e verniciato tortora opaco, finitura gofrata / *zinc and dove grey mat coated steel, embossed finish*



VA
acciaio zincato e verniciato antracite opaco, finitura gofrata / *zinc and anthracite grey mat coated steel, embossed finish*



VM
acciaio zincato e verniciato mattone opaco, finitura gofrata / *zinc and brick red mat coated steel, embossed finish*



VV
acciaio zincato e verniciato verde tiglio opaco, finitura gofrata / *zinc and willow green mat coated steel, embossed finish*



VZ
acciaio zincato e verniciato azzurro opaco, finitura gofrata / *zinc and light blue mat coated steel, embossed finish*

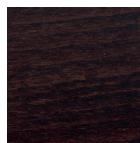
LEGNO / WOOD



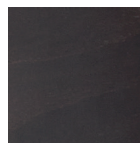
FN - 500
faggio naturale / *natural beech*



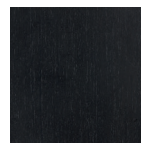
F1 - FS - 501
faggio sbiancato / *bleached beech*



FW - 502
faggio tinto wengé / *wenge stained beech*



FK
faggio smoke / *smoke beech*



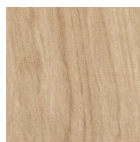
FB
faggio tinto nero / *black stained beech*



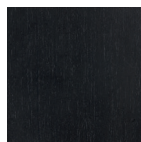
FG - 504
faggio verniciato grigio / *grey stained beech*



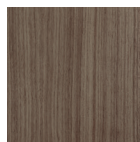
HS
frassino sbiancato / *bleached ash*



RN
rovere naturale / *natural oak*



NR
rovere tinto nero / *black stained oak*



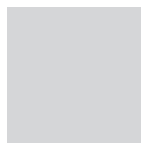
NC
noce canaletto / *Canaletto walnut*

FINITURE PIANI TAVOLI / TABLE TOP FINISHES

STRATIFICATO COMPACT / COMPACT LAMINATE



10
bianco / *white*



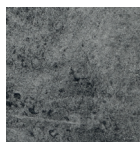
82
grigio chiaro / *light grey*



81
antracite / *anthracite grey*



15
tortora / *dove grey*



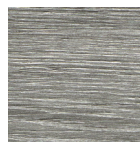
87
effetto cemento / *concrete effect*



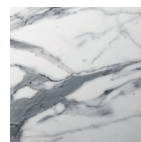
90
effetto pietra / *stone effect*



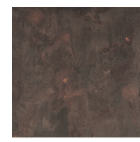
570
rovere tortora / *dove grey oak*



571
rovere castoro / *beaver oak*

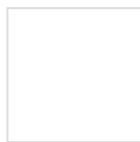


572
effetto marmo Carrara / *Carrara marble effect*



573
effetto Corten / *Corten effect*

ACCIAIO ZINCATO E VERNICIATO A POLVERE POLIESTERE
ZINC AND POLYESTER POWDER COATED STEEL

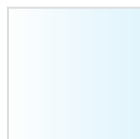


10
bianco
white



81
antracite
anthracite grey

VETRO TEMPERATO / TEMPERED GLASS



400
trasparente
transparent



412
laccato bianco
white lacquered



401
grigio fumé
smoked grey



413
serigrafato
screen printed



410
deco wave
wave pattern

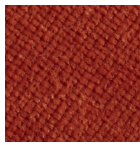
TESSUTI / FABRICS

V3X VELLUTO – CONSIGLIATI / VELVET – STANDARD

IGNIFUGO / FIRE RETARDANT



V3 57



V3 58

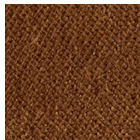


V3 59

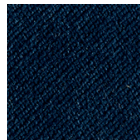
V3Y VELLUTO – ALTRE OPZIONI / VELVET – ALTERNATIVE OPTIONS



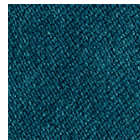
V3 60



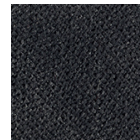
V3 62



V3 63



V3 64



V3 66

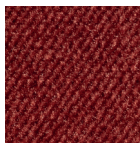
I 11M - UNI 9175
 I Classe 1 - UNI 9177
 EN EN 1021:14 Part.1/2
 GB BS 5852:06 crib 5
 F NF - P 92 503 - M1
 D DIN 4102 - B1
 USA California TB 117:2013
EN IMO MED - Ftp 307 Part.8

V4X VELLUTO – CONSIGLIATI / VELVET – STANDARD

IDROREPELENTE / WATER REPELLENT



V4 38



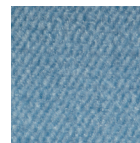
V4 39



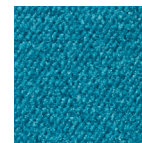
V4 40



V4 44



V4 47



V4 50

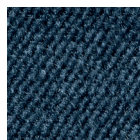
V4Y VELLUTO – ALTRE OPZIONI / VELVET – ALTERNATIVE OPTIONS



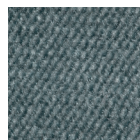
V4 45



V4 46

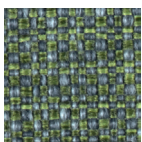


V4 48

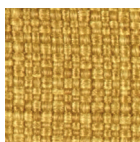


V4 49

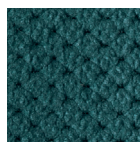
TX TESSUTO – CONSIGLIATI / FABRIC – STANDARD



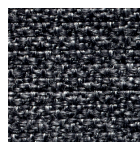
T5 26



T5 27



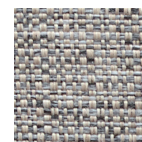
M2 09
idrorepellente
water repellent



T3 25
ignifugo
fire retardant



I Classe 1
USA Calif. Bull. 117 June 2013
GB BS 5852 Crib N.5 using a CM Foam 35 Kg/cu.m.
EN EN 1021 Part. 1-2 using a CM Foam 35 Kg/cu.m. Oeko-Tex Standard 100



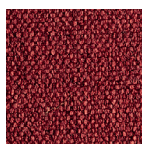
T6 28
ignifugo
fire retardant



I UNI 9175 (CL 1.1M)
 UNI 8456 (CL 1)
 UNI EN 10211-2
 BS5852 1-2

TY **TESSUTO – ALTRE OPZIONI** (per Lady B Pop: tessuto consigliato)
FABRIC – ALTERNATIVE OPTIONS (for Lady B Pop: recommended fabric)

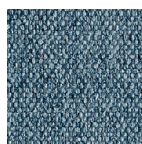
IDROPELLENTE
WATER REPELLENT



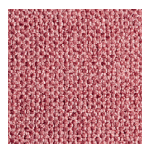
T9 78



T9 79



T9 80



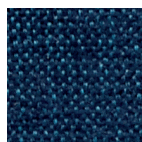
T9 85

T7X **TESSUTO – CONSIGLIATI / FABRIC – STANDARD**

IGNIFUGO / FIRE RETARDANT



T7 29



T7 30

I Classe 1. IM (UNI 9175) **GB** BS-5852-1 (Section 4, sources 0+1)

EPX **SIMILPELLE – CONSIGLIATI / SIMIL-LEATHER – STANDARD**

IGNIFUGO / FIRE RETARDANT



EP 70

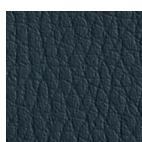


EP 73



EP 75

EPY **SIMILPELLE – ALTRE OPZIONI / SIMIL-LEATHER – ALTERNATIVE OPTIONS**



EP 71



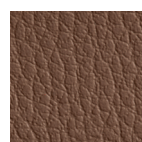
EP 72



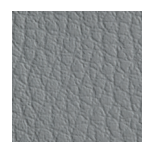
EP 74



EP 67



EP 68



EP 69

I Classe 1. IM (UNI 9175) **EN** 1021/1 **EN** 1021/2

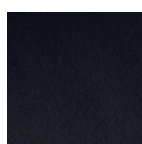
CNY **CUOIO NATURALE – ALTRE OPZIONI / NATURAL LEATHER – ALTERNATIVE OPTIONS**



CN 82



CN 83



CN 84



CN A1

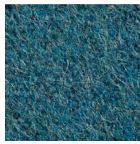


CN A2

Per abbinamento categorie tessuti ai prodotti far riferimento alle schede tecniche. Per ragioni tecniche di stampa o di fotografia i colori stampati possono differire dai colori reali. / Please refer to each model on the technical sheet for matching the fabrics. Printed colours may be different than real ones because of printing or photographic technical reasons.



WF 95



WF 96



WF 97



WF 98

I Classe 1 IM con schiuma standard fire retardant con densità 25 Kg/cu.m. **EN** EN 1021 Part. 1-2 using a standard foam 20/22 Kg/cu.m.

MX TESSUTO – CONSIGLIATI / **FABRIC** – STANDARD



M1 05

MY TESSUTO – ALTRE OPZIONI / **FABRIC** – ALTERNATIVE OPTIONS



M1 16



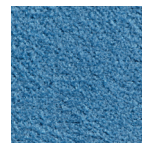
M1 17



M1 18



M1 19



M1 20

USA Cal. Tech. Bulletin 117, Section E, Part. 1 (CALIFORNIA TEST)

T4X TESSUTO – CONSIGLIATI / **FABRIC** – STANDARD

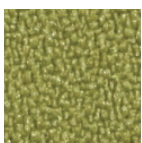


T4 51



T4 55

T4Y TESSUTO – ALTRE OPZIONI / **FABRIC** – ALTERNATIVE OPTIONS



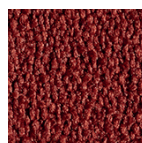
T4 53



T4 A3



T4 A4



T4 A5



T4 56

I Classe 1 **D** B1 DIN 4102 **F** M1 **GB** BS 5852 Crib 5 using a CM Foam 35 Kg/cu.m. **A** Q1 (OENORM 3800 Part 1) **A** B1 (OENORM B3825)
EN EN 1021 Part. 1-2 using a CM Foam 35 Kg/cu.m. **EN** EN 13773 Burning Behaviour: class 1 **EN** EN 13501 - 1esp. 1,2 : B-s1, d0 **USA** Calif. Bull. 117 June 2013
EN EN ISO 6940/6941 **CH** Fire Protection Classification: 5.3



T8 06

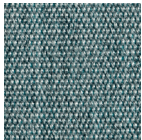


T8 07



T8 08

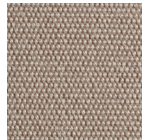
WPX ACRILICO – CONSIGLIATI / *ACRYLIC – STANDARD*



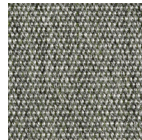
WP 86



WP 87

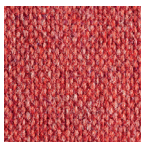


WP 88

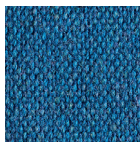


WP 89

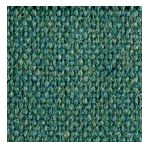
KY TESSUTO – ALTRE OPZIONI / *FABRIC – ALTERNATIVE OPTIONS*



K1 90

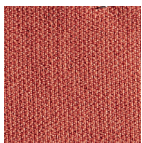


K1 99



K1 00

I UNI 9175 Classe 1 IM EN 1021 - 1 (cigarette) EN 1021 - 2 (match) GB BS 7176 Low Hazard
GB BS 5852 Ignition Source 5 GB BS 7176 Medium Hazard F NF D 60 - 013
A ÖNORM B 3825 & A 3800-1 (58kg/m3 CMHR Foam) GB BS 5867 - 2:Type B Curtains & Drapes



K2 04

EN 1021 - 1 (cigarette) EN 1021 - 2 (match) GB BS 7176 Low Hazard
EN 13501 - 1 Adhered Class B, s1, d0 EN 13501 - 1 Un-adhered Class C s1, d0

TC TESSUTO CLIENTE / *COM - CUSTOMER OWN MATERIAL*



Minimo ordine 20 pezzi.
Fattibilità da valutare.

*Minimum 20 pcs.
Fabric to be approved.*

TESSUTI PER CUSCINI FISSI E DA APPOGGIO / FABRICS FOR FIXED AND MOBILE CUSHIONS

VELLUTINO per Cuscini Igloo Chair (Art. 1500) / **VELVET** for Igloo Chair cushions (Art. 1500)

IGNIFUGO / FIRE RETARDANT



01



03

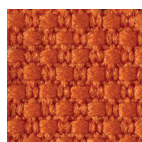
I Classe 1 D B1 (DIN 4102) F M1 GB BS 5852: 1990 Crib 5 using a CM Foam 35 Kg/cu.m.
GB BS 5867: Part 2: 1980-type B EN EN 1021:1994 Part. 1-2 EN EN 7170:1995 Oeko-Tex Standard 100 Classe 1

TESSUTO per Cuscini Igloo Chair (Art. 1500) / **FABRIC** for Igloo Chair cushions (Art. 1500)

IGNIFUGO / FIRE RETARDANT



11



12



13

I Classe 1 D B1 (DIN 4102) F M1 GB BS 5852: 1990 Crib 5 using a CM Foam 35 Kg/cu.m.
EN EN 1021 Part. 1-2 using a CM Foam 35 Kg/cu.m. Oeko-Tex Standard 100 Classe 1
CH Fire Protection Classification: 5.2 USA Calif. Bull. 117 June 2013 EN EN 13501 - 1esp. 1,2 : B-st, d O
EN EN 13773 Burning Behaviour: Class 1

COTONE PANAMA per Cuscini Igloo Chair (Art. 1500) | per Cuscini Miss B (Art. 1504)

PANAMA COTTON for Igloo Chair cushions (Art. 1500) | for Miss B cushions (Art. 1504)

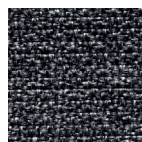


21

TESSUTO per Cuscini Igloo Chair (Art. 1500) | per Cuscini Fissi Miss B

IGNIFUGO / FIRE RETARDANT

FABRIC for Igloo Chair cushions (Art. 1500) | for Miss B fixed cushions



25

I Classe 1
USA Calif. Bull. 117 June 2013
GB BS 5852 Crib N.5 using a CM Foam 35 Kg/cu.m.
EN EN 1021 Part. 1-2 using a CM Foam 35 Kg/cu.m.
Oeko - Tex Standard 100

TESSUTO per Cuscini Miss B (Art. 1504) | per Cuscini Fissi Miss B

IGNIFUGO / FIRE RETARDANT

FABRIC for Miss B cushions (Art. 1504) | for Miss B fixed cushions

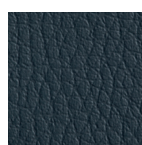


32

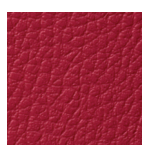
I C1 (UNI 9174 - UNI 8456)
D B1 (DIN 4102)
F M1 (NF P 92501-7)
GB CRIB 5 (BS 5852 part II)
EN 1021/1-2 cigarette 2 match
EN BS 7176 NH (Medium Hazard)
EN NF D 60013 (AM18)

SIMILPELLE per Cuscini Fissi Miss B / **SIMIL-LEATHER** for Miss B fixed cushions

IGNIFUGO / FIRE RETARDANT



71



72



73

I Classe 1. IM UNI 9175
EN EN 1021/1
EN EN 1021/2



06



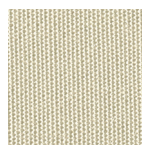
07



08

anche per cuscini
fissi Miss B / also
for Miss B fixed
cushions

ACRILICO per Cuscini Summer (Art. 1495) / **ACRYLIC** for Summer cushions (Art. 1495)



10

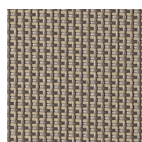
**USO OUTDOOR
IDROREPELENTE
ANTIMACCHIA
OUTDOOR USE
WATER REPELLENT
STAIN RESISTANT**

ALTRI TESSUTI / OTHER FABRICS

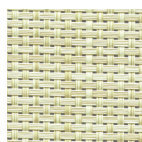
TESSUTO TRASPIRANTE IDROREPELENTE / SYNTHETIC FABRIC, BREATHABLE, WATER-REPELLENT



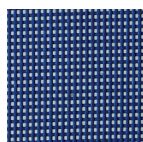
T10



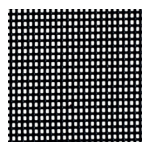
T15



T16



T60



T81

CORDA NAUTICA per intreccio sedute Lisa Filò / **NAUTICAL ROPE** for Lisa Filò



N84



N81



N80



N15



N30

CORDA IN ESTRUSO DI PVC CON ANIMA IN NYLON per intreccio sedute Lisa Club

WOVEN EXTRUDED PVC REINFORCED WITH NYLON WIRES for Lisa Club



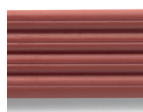
P10



P86



P74



P73



Le qualità di responsabilità e sostenibilità ambientale nella produzione industriale rappresentano una speranza verde per il futuro di tutti noi. Anche nella produzione e nello stampaggio di tecnopolimeri è possibile concorrere al processo di riciclaggio dei materiali e a un metodo di lavorazione che rispetti e mantenga pulito l'ambiente. Tutti i prodotti Scab Design sono realizzati con materiali riciclabili al 100% poiché i singoli componenti che li costituiscono sono rapidamente differenziabili. Ogni elemento plastico riporta il marchio d'identificazione secondo la normativa ISO11469:2001, e fornisce facili indicazioni per il riciclaggio. Tutti i materiali usati da SCAB Design per la sua produzione sono di prima qualità.

LE MATERIE PLASTICHE – SCAB Design utilizza per la sua produzione tecnopolimeri dalle caratteristiche ottimali, quali: robustezza, stabilità, atossicità, inalterabilità agli agenti atmosferici compresi muffe, smog e polvere, resistenza ai raggi UV. Tutti i tecnopolimeri sono integralmente riciclabili nel rispetto dell'ambiente. **Per la pulizia** usare solo sapone liquido neutro diluito in acqua. Pulire con panno morbido umido per evitare graffiature, non utilizzare assolutamente spugnette abrasive. Non impiegare prodotti abrasivi, a base di cloro e solventi in generale quali: alcool, benzina, acetone, trielina, ammoniaca ecc., poiché tali sostanze opacizzano le superfici plastiche.

L'originalità di tutte le sedute Wave e l'esclusività della loro forma derivano dall'applicazione di una tecnologia di stampaggio innovativa e altamente complessa, unica nel suo genere. Eventuali piccole imperfezioni, variazioni di colore o sbavature sono caratteristiche intrinseche del prodotto, ineliminabili, che confermano l'unicità di ogni pezzo.

I METALLI | ACCIAIO – SCAB Design dedica la massima attenzione ai "Newton di resistenza meccanica" ed all'alta qualità degli acciai impiegati nella costruzione del prodotto.

I METALLI | ALLUMINIO – L'alluminio è un metallo che unisce leggerezza e grande robustezza, e la sua superficie viene anodizzata o verniciata con polveri poliestere per una maggiore resistenza alla corrosione. **Per la pulizia** delle superfici metalliche in acciaio o alluminio o verniciate usare solo un panno morbido umido. Non impiegare creme o paste abrasive specifiche per pulire i metalli, non usare solventi. Si raccomanda di non utilizzare assolutamente per la pulizia spugnette abrasive o pagliette metalliche.

I LEGNI – Gli arredi SCAB Design con scocca e/o telaio in legno sono prodotti conformemente alle vigenti normative europee nel rispetto dell'ambiente. **Per la pulizia** usare solo un panno morbido inumidito con acqua tiepida ed asciugare immediatamente con un panno morbido asciutto. Non impiegare prodotti abrasivi, aggressivi, a base di cloro o solventi in generale (ammoniaca, candeggina o detersivi contenenti acidi). Assorbire immediatamente con un panno asciutto e pulito eventuali liquidi rovesciati, il legno teme l'umidità. Non esporre a luce diretta. Non esporre a fonti di calore. Il legno è soggetto ad alterazioni di colore se esposto alla luce del sole. Il legno è una materia prima naturale; ciò significa che non è possibile garantire l'omogeneità e l'uniformità propria invece dei materiali sintetici. Anche elementi realizzati dalla stessa pianta possono evidenziare differenze cromatiche. Variazioni di colore o eventuali imperfezioni, dovute alla fibra stessa del legno o alle venature, sono garanzia di qualità del legno massello e ne costituiscono il pregio. Le colorazioni dei nostri legni sono a base acqua per garantire il rispetto dell'ambiente e della salute.

I VETRI – Piani in vetro temperato secondo le normative UNI EN 12150, trasparente, serigrafato o laccato. **Per la pulizia** usare solo detersivi specifici per vetri o sapone liquido neutro diluito in acqua. Pulire con panno morbido umido per evitare graffiature ed asciugare accuratamente per assicurarne la brillantezza. Non impiegare prodotti abrasivi o aggressivi.

I TESSUTI – **Per la pulizia** dei tessuti si raccomanda di consultare la scheda tecnica specifica. Per la pulizia quotidiana non spazzolare ma utilizzare regolarmente l'aspirapolvere, evitando di esercitare pressione sul tessuto. Per le macchie leggere utilizzare una spazzola morbida inumidita, impiegando eventualmente detersivi delicati o aceto bianco diluiti in abbondante acqua.

Non impiegare prodotti abrasivi né detersivi o solventi. Non impiegare generatori di vapore ad alta pressione.

LA SIMILPELLE – **Per la pulizia** quotidiana utilizzare un panno morbido inumidito con acqua. Per lo sporco più ostinato utilizzare una spugna morbida con acqua e sapone. Non impiegare prodotti abrasivi né detersivi o solventi. Assorbire immediatamente con un panno asciutto e pulito eventuali liquidi rovesciati.

IL CUOIO – SCAB Design utilizza per le sedute imbottite solo cuoio naturale a concia vegetale. **Per la pulizia** quotidiana utilizzare un panno morbido asciutto. Per lo sporco più ostinato utilizzare un panno morbido inumidito con acqua. Non impiegare prodotti abrasivi né detersivi o solventi.



The qualities of responsibility and environmental sustainability in industrial production are a green hope for the future of all of us. Contributing to the process of recycling materials and a production method that respects the environment and keeps it clean is also possible in the production and moulding of technopolymers.

All the SCAB Design production is made with 100% recyclable materials as their individual components can quickly be sorted for disposal.

Every plastic element has the identification mark according to ISO11469:2001, and provides easy directions for recycling.

All materials used by SCAB Design for its production are of first quality.

PLASTICS – SCAB uses techno-polymers with ideal characteristics to manufacture its products, polymeric materials that ensure sturdiness, stability, non-toxicity, resistance to atmospheric agents including mould, dust and smog, and resistance to UV rays. All our techno-polymers are 100% recyclable in full respect for the environment. **For cleaning** use neutral liquid soap diluted in water. Clean with a soft damp cloth to avoid scratches, by all means refrain from using abrasive sponges. Do not use abrasive or chlorine-based products, or solvents in general such as alcohol, benzene, acetone, trichloroethylene, ammonia etc., because these substances tarnish plastic surfaces.

The innovative, exclusive and highly complex moulding technology makes all Wave chairs a very original and exclusive model. This technology is really unique. Any small imperfection that might be present, any colour variation, are typical features of the product, that cannot be avoided and that confirm the product is a unique piece.

METALS | STEEL – Only the highest quality steels are used and a strict control on mechanical resistance values is applied throughout the whole manufacturing process.

METALS | ALUMINIUM – Aluminium is a metal that combines lightness and great strength, and its surface is anodised or polyester powder coated to ensure superior resistance to corrosion. **For cleaning.** Use only a soft damp cloth to clean steel, aluminium or coated metal surfaces. Do not use abrasive creams or pastes to clean metals and do not use solvents. We recommend that by all means you refrain from using abrasive sponges or steel wool to clean the surfaces.

WOOD – SCAB Design furniture items with wooden shell and/or Frame are manufactured in compliance with European standards, with full respect for the environment. **For cleaning** use only a soft suiting damp cloth and warm water and dry immediately with a soft, dry suiting.

Do not use abrasive or aggressive products, chlorine based products and solvents in general. (ammonia, bleach or cleaning products containing acid). Immediately mop up any spilt liquids with a clean dry cloth, wood does not stand the humidity.

Do not expose to direct sunlight. Do not expose to sources of heat.

Wood is a natural material and shall be subject to change color when exposed to sunlight. Wood is a natural raw material; this means that you cannot guarantee the homogeneity and uniformity of synthetic materials. Even elements made from the same plant may show colour differences. Colour variations or imperfections, due to the fibres or veins of wood, are a guarantee of the quality of solid wood and constitute its uniqueness. The colours of our woods are water-based, to respect the environment and health.

GLASS – Tempered glass table tops pursuant to UNI EN 12150 standards translucent, screen printed or lacquered. **For cleaning,** use specific cleaning products for windows or a liquid neutral soap diluted in water only. Clean with a soft damp cloth to prevent scratches and dry carefully to maintain shininess. Do not use abrasive or aggressive products.

FABRICS – **For instructions** on how to clean fabrics, please refer to the specific data sheet. For everyday cleaning do not brush, but vacuum clean regularly, avoiding applying pressure to the fabric. For light stains, use a soft damp brush, using if necessary mild detergents or white vinegar diluted in a lot of water. **Do not use abrasive products or detergents or solvents. Do not use high pressure steam washers.**

SIMIL-LEATHER – **For cleaning.** For everyday cleaning, use a soft, damp cloth. For more stubborn dirt, use a soft sponge with water and soap. Do not use abrasive products or detergents or solvents for cleaning. Immediately mop up any spilt liquids with a clean dry cloth.

LEATHER – Scab Design uses only natural vegetable tanned leather for its upholstered seats. For everyday cleaning, use a soft dry cloth. For more stubborn dirt, use a soft damp cloth. Do not use abrasive products or detergents or solvents for cleaning.